

At the first signs of hair loss*, use THYMUSKIN® Shampoo and Serum

WHAT IS THYMUSKIN®?

Thymuskin is a dermatological system to counter hair loss and to activate new hair growth. It is highly effective, offers very good tolerability for various types of hair loss and does not have any side effects.

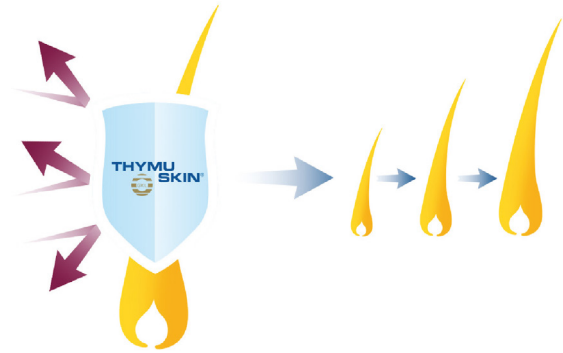
PROVEN EFFECTIVENESS

Studies and controlled observational scientific investigations performed on more than 1,000 men and women at dermatology and university clinics in Germany and internationally have verified the effectiveness of Thymuskin on all forms of hair loss. In addition, Thymuskin is free from side effects - even with long-term use.

GKL-02 THYMIC PEPTIDE COMPLEX

Thymuskin contains the patented active ingredient GKL-02 Thymic Peptide Complex. The biological activity of thymuskin is particularly evident in the activation of hair cells (keratinocytes), which have a decisive influence on hair growth. Hair formation is stimulated.

The biological effectiveness depends on the sufficient concentration, the duration of application and the presence of intact hair follicles. Depending on the preparation, the GKL-02 Thymic Peptide Complex is enriched with other auxiliary substances. In this way, Thymuskin products can be adapted to the different needs of the scalp and hair.



HOW TO USE THYMUSKIN® PRODUCTS

The main principle

- » Wash your hair with the Thymuskin Shampoo
- » Massage the Thymuskin Serum into your scalp

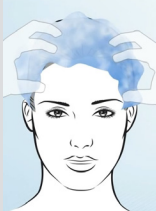
THYMUSKIN® SHAMPOO

The pH value skin-friendly cleansing & caring shampoos clean from accumulated dirt particles and prepare for the application of Thymuskin Serum by releasing the active agent. It contains the GKL-02 Thymic Peptide Complex that already gives the scalp a preparatory treatment. This allows the subsequently applied Thymuskin Serum to be optimally effective. The application of Thymuskin Shampoo can be adapted to your usual washing rhythm (at least 1x per week).

All Thymuskin Shampoos are suitable for long-term use and can be mixed & matched with all Thymuskin Serums.

APPLICATION THYMUSKIN® SHAMPOO

1. Rinse hair with warm water for gentle cleansing and basic care.
2. Massage the shampoo into your hair and scalp and allow acting for a short time.
3. Thoroughly rinse with warm water.
4. Dry clean hair, preferably with a towel.



Dosage THYMUSKIN® Shampoo

You can adjust the amount to suit your individual needs. Approximately the size of a hazelnut (ca. 2ml). However, if you use more, there is no risk of overdose.

THYMUSKIN® SERUM

Use once a day until the desired result is achieved. If the cause of the hair loss is not permanent (as it is with diffuse hair loss), the Thymuskin Serum can be slowly reduced and discontinued after a stabilization phase.

DURATION OF APPLICATION

- » **Diffuse hair loss:** Depending on the cause and stage, a minimum period of use of 3 - 6 months is recommended.
- » **For genetically caused hair loss** long-term use is recommended, because due to the genetic predisposition, the cause is permanent. After discontinuation of Thymuskin hair loss might occur again. First successes may be seen after 12 weeks, depending on the stage and condition of the hair roots.
- » **Small bald spots:** As soon as the bald spots are overgrown again, use may be reduced to 3x per week for another 4-6 weeks in order to maintain the successful status. Afterwards, Thymuskin can be slowly discontinued.

APPLICATION THYMUSKIN® SERUM

1. Place the applicator tip directly on the scalp to apply drops of serum point by point.
2. Now massage the serum into the scalp with your fingertips in gently circling movements until the scalp feels dry.
3. Proceed this way. Usually it needs about 4-6 parted hair lines for the total scalp. Do not rinse out.
4. The Thymuskin Serum can be applied to the scalp, both in the case of still damp, as well as already dried hair. Also on the days when the hair was not washed.
5. You can use your styling products as normal but leave out application to the scalp.
6. Avoid to point hair dryer directly on the scalp. Blow dry with distance and only warm, not hot air.



Dosage THYMUSKIN® Serum

Scalp-wide coverage with Thymuskin Serum, spread out evenly but it should not run down the head. No need to apply it on the hair. Dosage usually 2-4ml. However, if you use more, there is no risk of overdose.

NOTES

- » **Settling-in phase:** When starting to use Thymuskin, activation of hair follicles may result in slightly increased hair loss. To keep this possible effect to a minimum, adjust the use of the Thymuskin Shampoo to your usual washing rhythm (at least once a week). Apply Thymuskin Serum every second day in the first 4 weeks and daily thereafter (even on days when you do not wash your hair). Gradually reduce Thymuskin after finishing the therapy.
Please note that initial increased loosening of the hair is a positive sign, confirming that the hair roots have been activated. However, sudden severe hair loss is not related to the use of Thymuskin. Hair loss usually occurs in flare-ups, so there may be some overlap in timing.
- » In particular, Thymuskin Sensitive Shampoo and Thymuskin Sensitive Serum Gel are **suitable for use during pregnancy or breastfeeding**, as well as for **children aged 3 and up**. All Thymuskin shampoos can be applied without any concern in this regard. Thymuskin is very well tolerated when used as directed.
- » Hair loss can be the symptom of an organic cause. The healing of organic causes does not belong to the field of application of Thymuskin. Therefore, hair loss can occur again after stopping Thymuskin usage as long as the organic cause persists. In these cases you should consult your doctor.

WHICH THYMUSKIN® TO USE?

Hair loss has different causes. The Thymuskin 2-step system effectively meets your personal hair loss needs.

STEP 1

Select the THYMUSKIN® SHAMPOO that best suits your hair type.

All Thymuskin Shampoos are suitable for long-term use and can be mixed & matched with all Thymuskin Serums.



Sensitive Shampoo
Dry, sensitive hair
– most common hair type in women



Classic Shampoo
Normal to greasy hair
– most common hair type in men



Regeneration Shampoo
Greasy scalp with redness & itching, dandruff
• Regulates dandruff formation
• Relieves irritation such as redness and itching



Forte Shampoo
Stressed hair that needs a lot of care
• High content of the GKL-02 Thymic Peptide Complex and additional care substances

STEP 2

Select the right THYMUSKIN® SERUM by determining the type of hair loss.



Sensitive Serum Gel
Suitable for diffuse hair loss and small, bald spots
• Especially for sensitive or dry scalp
• High content of the GKL-02 Thymic Peptide Complex
• The application is suitable for children from 3 years, as well as during pregnancy and breast-feeding



Small bald spots: progression women / men similar



Diffuse: progression women / men similar



Classic Serum
Suitable in the case of genetic hair loss
• Original recipe with optimal active ingredient concentration and high yield



Genetic: progression women



Genetic: progression men



Forte Serum Gel
Suitable for hair loss due to chemotherapy and bald spots

- Especially for damaged scalp
- High content of the GKL-02 Thymic Peptide Complex and additional care substances



Chemo: progression women / men similar



Diffuse: progression women / men similar

You don't know the cause of your hair loss?

- In case of hair loss problems, we recommend to consult your doctor
- Our interactive product finder at www.thymuskin.de/productfinder will also help you choose the right products
- Or describe your personal situation by mail at info@thymuskin.de

Please provide following information for personal consultation:

1. Gender (male, female)
2. Age (ca.)
3. Cause or diagnosis if available or describe symptoms
4. For how long do you have the problem?

Information about user data handling in our data protection declaration at www.thymuskin.de

Vita-Cos-Med Klett-Loch GmbH

Bautzener Weg 1-3
68309 Mannheim / Germany
Fax +49 (0) 621-712381
info@thymuskin.de
www.thymuskin.de

 **non-animal
thymic peptides**